



If **home automation** for years seems like science fiction story or whim of a millionaire today is easy thanks to technologies like the **X10 Protocol** and applications such as **TouchHome**, **SpeakHome** and **WatchHome**.

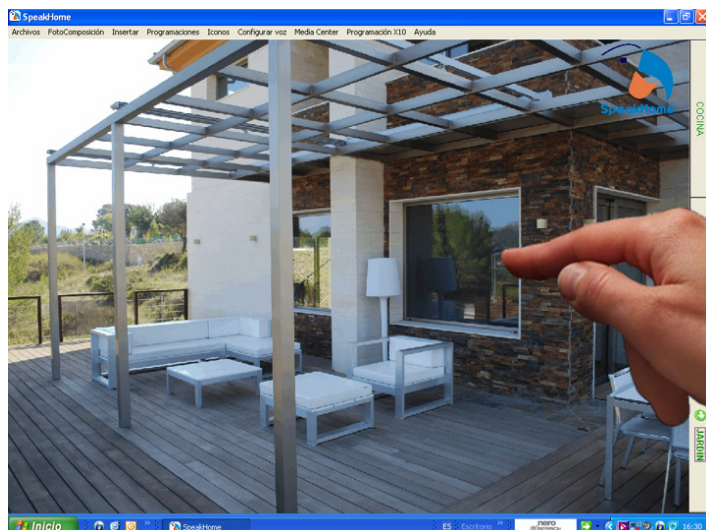
WatchHome is the first program that governs x10 home automation acting on his own house live image through interface touch screen and voice. With IP cameras you can use the captured image by the camera as a background to the application and drive the home automation components by pressing directly on them in the image. You see the house in real time and the result of double click on your lights, blinds, curtains, ...

Extends the functionality and features of TouchHome and SpeakHome with the addition of IP camera technology. It features an easy configuration and operation mode. It is available in Castilian, English and French.

Their main features are:

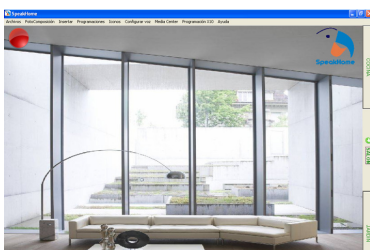
**Real Image**

The system integrates directly with the image captured by network cameras. Not have to create drawings, plans or photographic compositions. In addition, you will know the actual status devices found in each time at a glance to the screen.



**Without icons**

No need to use icons, you can double click directly on the image of the item you want to control and observe the response and status change. Need not insert any picture or icon on the image.



**Recording and playback**

You can record the images captured by the cameras, store and reproduce later. So you can see when a light went on or blind is lowered, ...

**Presence detection**

Watchhome incorporates a recognition system of pixel's change on the image to detect the presence and trigger alarm events or active home automation macros.

**Customizable**

Decide on the name under which your X10 modules are called (lights, blinds, macros, ...). You can introduce the name you want and change it whenever you want.

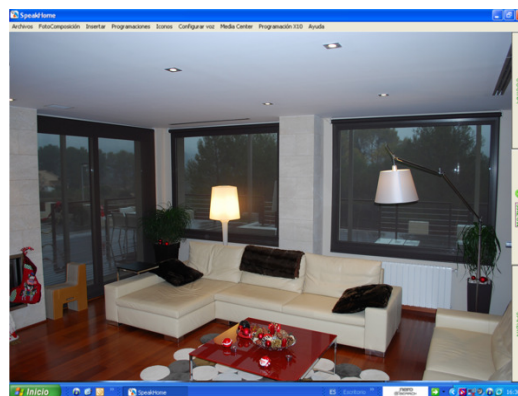
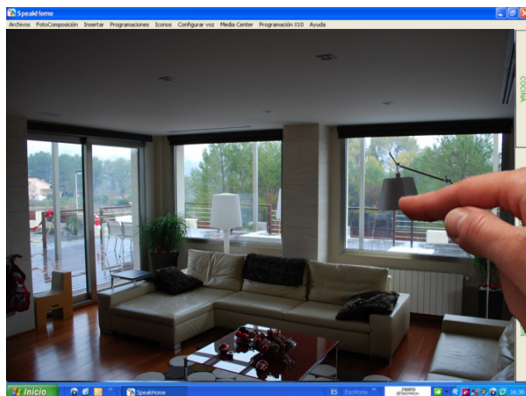
The program allows introduce the particular level of the house, a picture or even generate a photographic composition of the stays. If the house has several floors you enter a level for each of them and even one by stay. You can choose from a library of icons that best suit your home automation or create elements to your liking, from a drawing or a picture cut, making the program a personal touch.



**Smartphone and remote connection**

If you have a wireless network and a smartphone with a touchscreen already have a remote control to control the entire house from any part of it. And from anywhere in the world you can control with a PC or a smartphone, through a Internet connection.

With a simple glance at the screen you will see what lights and air conditioners are unnecessarily consuming and turn off or on , even from the office or the supermarket.



**Natural Speech**

The system is equipped with intelligent speech function. Greets you, ask you again if it has not understood any order, request additional information if the command received is not accurate ...

**Control TV, Music and Cinema**

You can control by voice the usual options of a remote control: raise or lower the volume, change channels or record your favorite program, without leaving the couch and without searching for the remote control. To do this, SpeakHome implements mechanisms voice to control Windows Media Center application.



You can also select the album you want to hear music, tune into your favorite radio station or watch a movie you have stored on the hard drive or recorded on a DVD of the most natural way: TALKING.

**Microphone**

SpeakHome works with any microphone that meets minimum quality requirements. But to achieve optimal system performance we recommend the CS60 USB Wireless microphone or the microphone from ambient MCD 100.

CS60 USB is a wireless microphone headsets with DECT technology. You carry it on your belt or shirt pocket and move with him through the house, even out into the garden, without losing communication. The signal passes through several walls without losing reliability.



With an ambient microphone as the MCD 100 from Plantronics not need to bring anything up. You can activate Speakhome pronouncing the password from anywhere in the room. SpeakHome implements an automatic gain compensating for the distance from speaker to microphone, allowing voice to be captured without problems at a maximum distance of 4 or 5 meters from the microphone.

**Multuser**

Need not pass any annoying voice training process. SpeakHome implements a voice recognition system independent of the user and therefore is not restricted to a maximum number of users.

**Creating schedules and macros**

Create macros according to your lifestyle. Just trigger a macro to turn off all lights, lowered curtains or shut off air conditioners. And you can schedule the execution of a macro according to sunlight or a certain time of the day.

You can use macros and schedules to ensure that house has the appearance of an occupied house when nobody is in it, just programming some elements, like lights, curtains,...

To start WatchHome simply need the X10 transmitting and receiving devices and a system to centralize its programming and operation, as a PC.



WatchHome operating system is installed on Windows XP, Windows Vista and Windows 7.